

Social Resilience: The Case of Migrants and COVID-19

Valerie Preston, York University

John Shields and Marshia Akbar, Ryerson University

Presentation for Newcomer Resilience and COVID-19: Settlement Policies and Programs
BMRC-IRMU webinar, Feb. 23, 2022



Purpose

- Illustrate the value of a social resilience approach by examining how institutions mitigated impacts of COVID-19 on migrants.
 - A social resilience approach
 - Impacts of COVID-19 on migrants
 - Institutional responses to COVID-19
 - Merits of a social resilience approach



Resilience and the Pandemic



Global Agenda | COVID-19 | Risk and Resilience | Pandemic Preparedness and Response

3 keys to a resilient post-pandemic recovery



History shows that in times of disruption, resilience depends on adaptability and decisiveness



Social Resilience Approach

- The capacity of migrants to navigate resources and institutional supports to overcome settlement challenges.
 - Relational
 - Learned and dynamic
 - Shaped by institutional context
 - Potentially transformative for migrants and institutions



Cambridge University Press

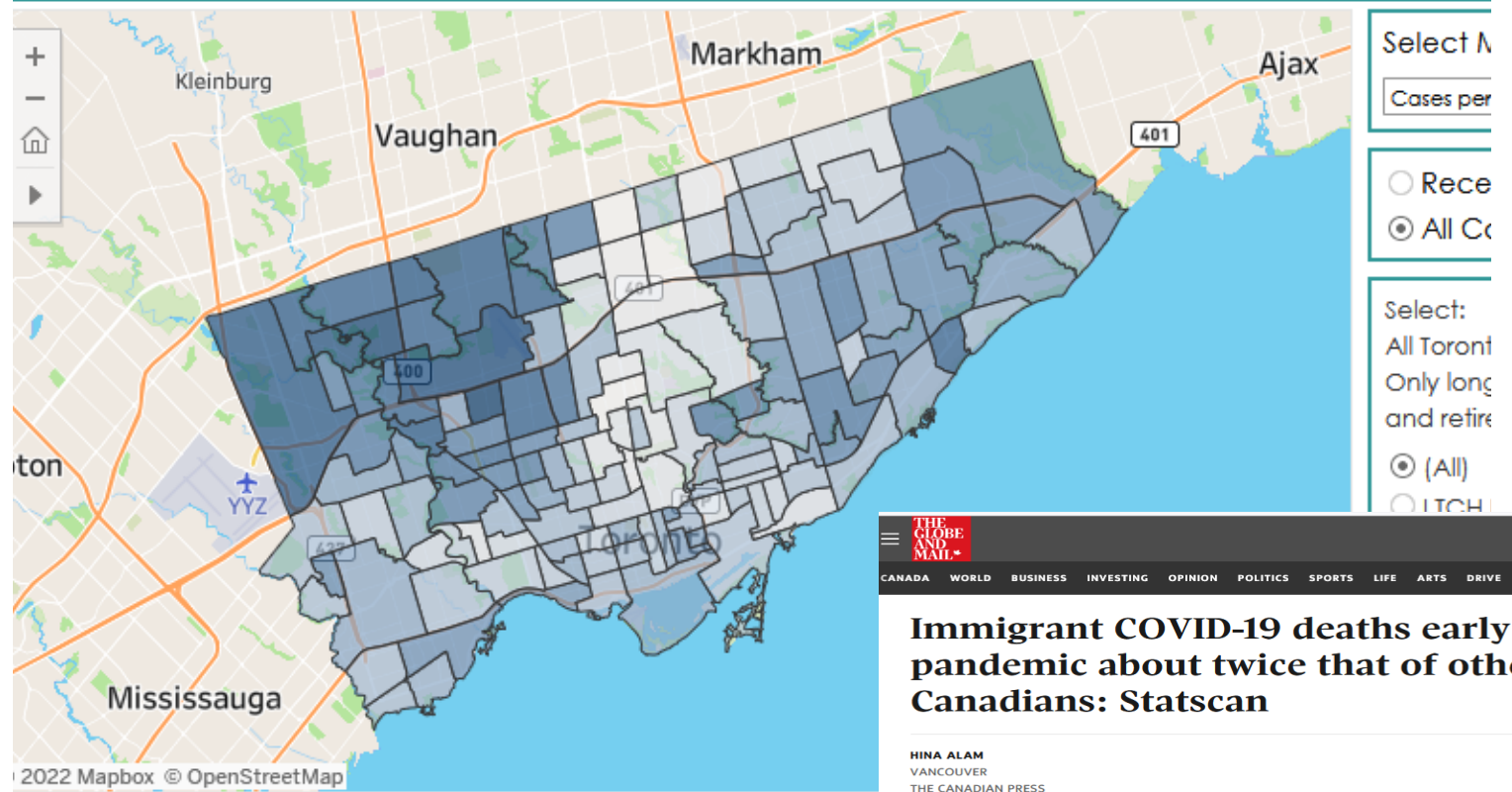


Unequal Impact of COVID on Migrants

HEALTH
Low COVID-19 vaccine uptake in vulnerable Ottawa neighbourhoods blamed on barriers

By Craig Lord - Global News
Posted August 11, 2021 1:01 pm - Updated August 11, 2021 3:58 pm

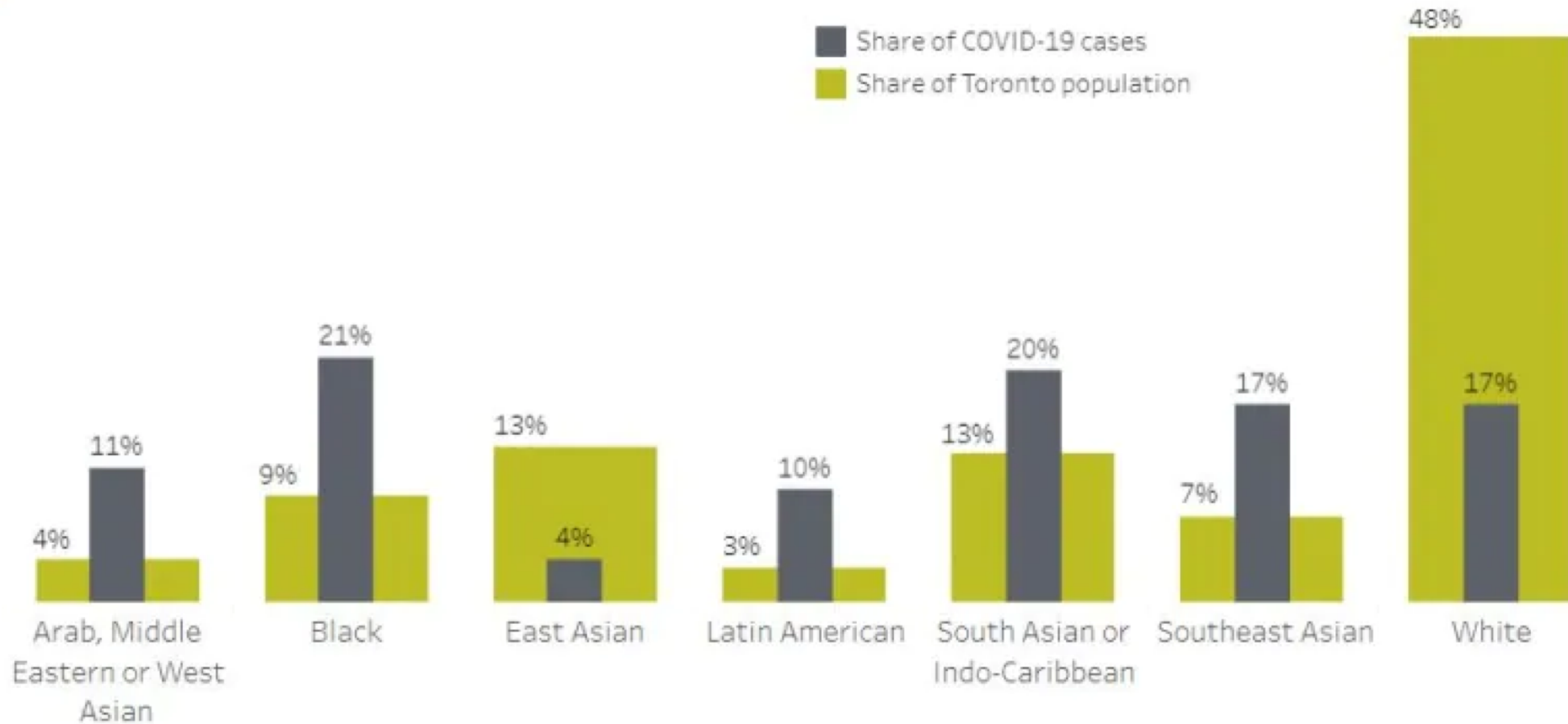
Map of Cumulative COVID-19 Rates by Neighbourhood - January 21, 2020 to February 18, 2022



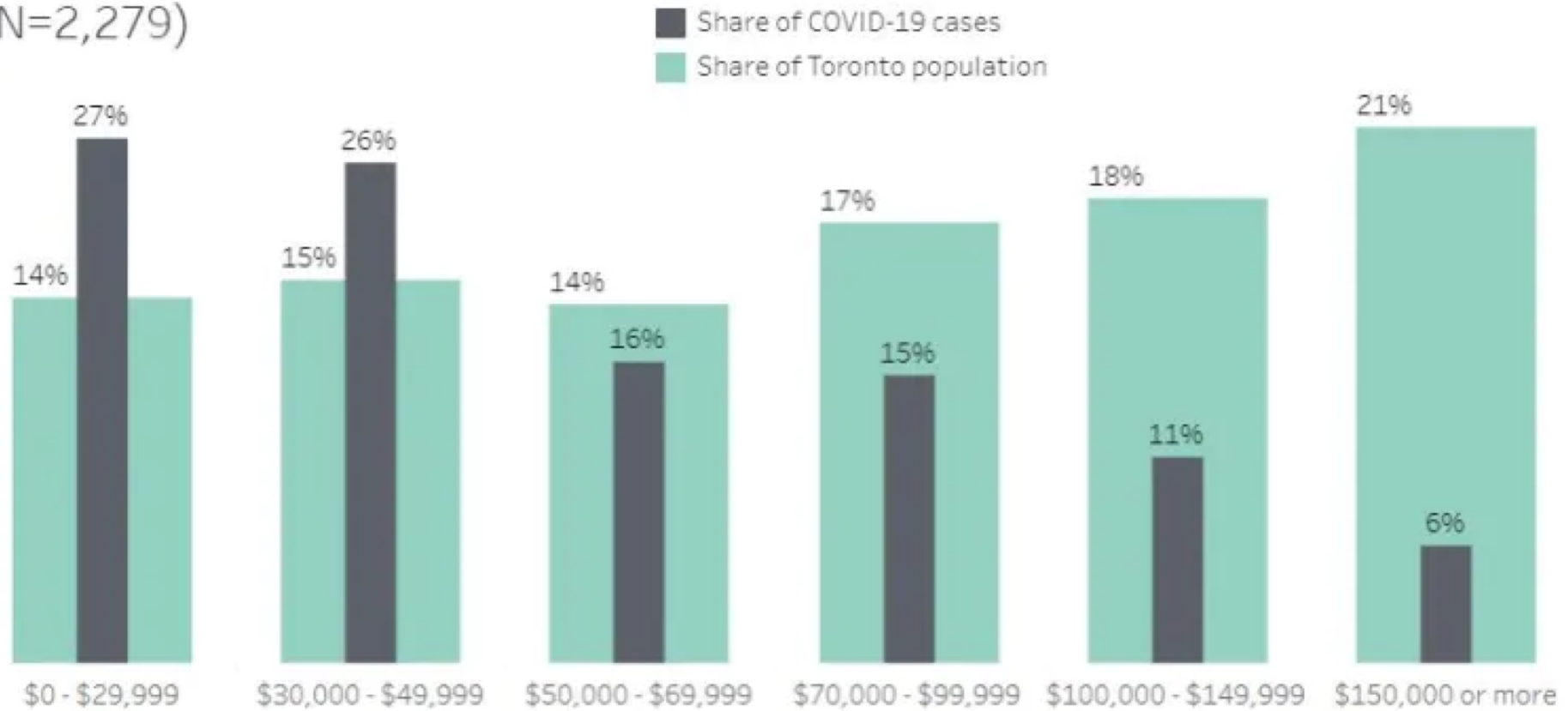
Immigrant COVID-19 deaths early in pandemic about twice that of other Canadians: Statscan

HINA ALAM
VANCOUVER
THE CANADIAN PRESS
PUBLISHED JUNE 10, 2021

Share of COVID-19 cases among ethno-racial groups compared to the share of people living in Toronto, with valid data up to July 16, 2020 (N=3,861)



Share of COVID-19 cases by household income compared to the share of people living in Toronto by income group, with valid data up to July 16, 2020 (N=2,279)



Institutional responses

- Service provision
- Information exchange
- Collaboration
- Advocacy

How local volunteers are helping Toronto's least vaccinated community get shots in arms



Only 57% of residents over 18 are immunized against COVID-19 in Taylor-Massey

Michelle McCann · Posted: Jul 10, 2021 4:00 AM ET | Last Updated: July 10, 2021

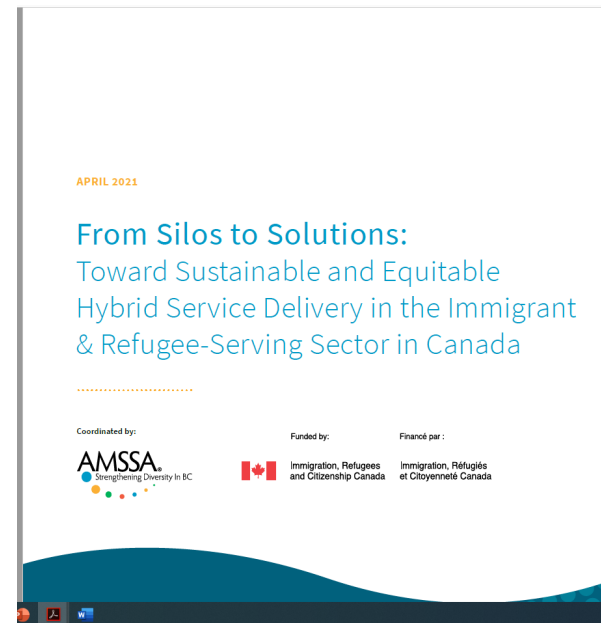


Community ambassadors stand outside an apartment building in the east end neighbourhood of Massey-Taylor. Volunteers have been knocking on doors in the area to encourage residents to get vaccinated. (Submitted by WoodGreen Community Services)



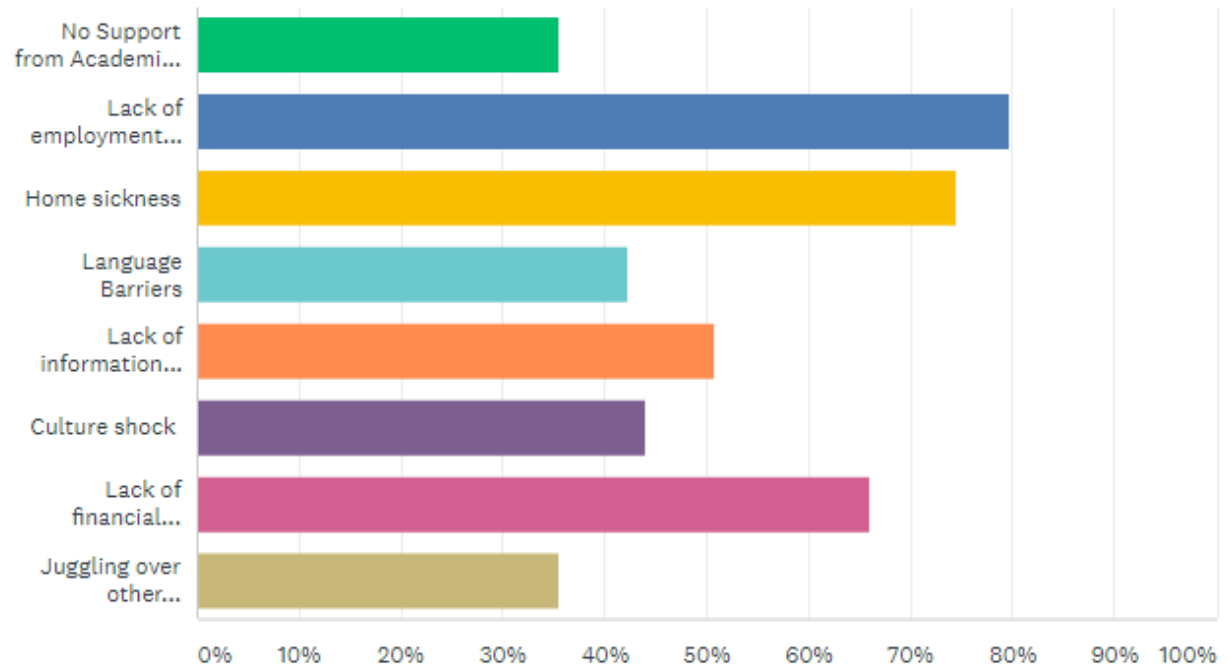
Institutional Responses: Service Provision

- Put services online
 - Accelerated technological change
 - Expanded eligibility for services
- Maintained critical in-person services
- Assisted with volunteer efforts



Institutional Responses: Information Exchange

Factors Affecting International Students' Mental Health



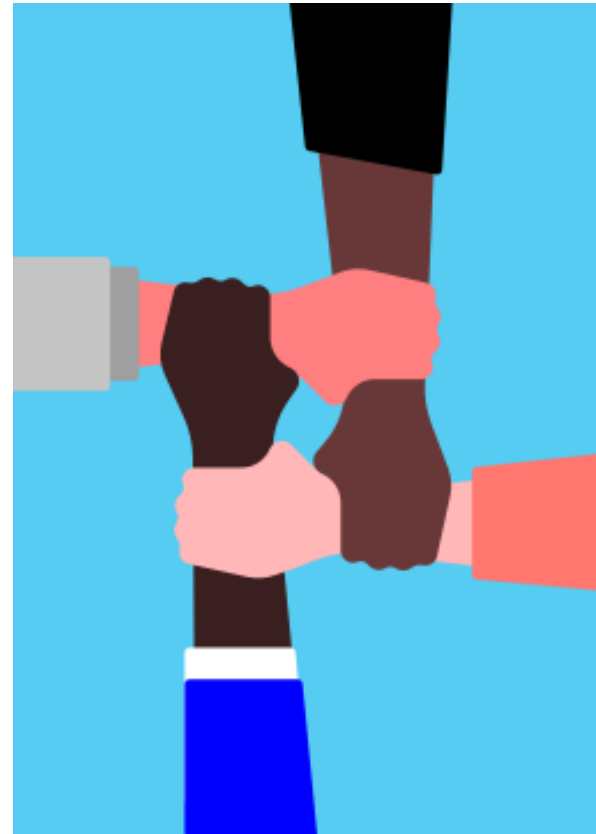
COSTI, 2021. *International Student Connect Survey*.

- Consultation tables
- Information needs



Institutional Responses: Collaboration

- Evolving relationships:
 - Existing relations deepened, e.g., schools
 - With new partners, e.g., food banks
- Diverse relationships:
 - Settlement agencies and other non-profits
 - Municipal, provincial, and federal governments
 - Ethnocultural groups, faith organizations, etc.
- Reflected past experience:
 - Syrian refugee initiative



Institutional Responses: Advocacy



No One is Illegal, May 2021, <https://www.facebook.com/CiteSansFrontieres/photos/pcb.3916681261719838/3916666808387950/>

Building Migrant Resilience in Cities Immigration et résilience en milieu urbain

Merits of Social Resilience Approach

Key factors

- Diverse organizations:
 - Well-funded, stable organizations and small, emerging organizations
- History of collaboration
- Involvement from multiple scales; neighbourhood to national
- Cooperative funders

Social resilience approach

“the key to building immigrant resilience is the same as building resilience in all of us: providing a deep sense of connection – connection to other people and to the community”
(Shields and Lujan 2019).



Takeways



Immigrant COVID-19 deaths early in pandemic about twice that of other Canadians: Statscan

HINA ALAM
VANCOUVER
THE CANADIAN PRESS
PUBLISHED JUNE 10, 2021



How local volunteers are helping Toronto's least vaccinated community get shots in arms



Only 57% of residents over 18 are immunized against COVID-19 in Taylor-Massey
Michelle McCann · Posted: Jul 10, 2021 4:00 AM ET | Last Updated: July 10, 2021



Community ambassadors stand outside an apartment building in the east end neighbourhood of Massey-Taylor. Volunteers have been knocking on doors in the area to encourage residents to get vaccinated. (Submitted by WoodGreen Community Services)

- Social resilience is relevant, especially during a pandemic
- Institutions mitigated the unequal impacts of COVID-19 through
 - Service provision
 - Information exchange
 - Collaboration
 - Advocacy
- Advantages of social resilience approach:
 - Relational
 - Dynamic
 - Social and geographical differences
 - Allows for transformation



Questions/Comments
Thank you

vpreston@yorku.ca



Building Migrant Resilience in Cities/Immigration et résilience en milieu



<http://bmrc-irmu.info.yorku.ca/>



Follow us on
twitter

@bmrc_irmu



You **Tube**

BMRC - IRMU