



BMRC
IRMU

Assuring Newcomer Success: Challenges and Opportunities

Presentation prepared for OLIP 4th Biennial Immigration Forum, November 20, 2017, Ottawa.

This research is funded by the Social Sciences and Humanities Research Council, Grant No. 895-206-1004.

Special thanks to Damaris Rose, PI for Syrian Housing Study, Marshia Akbar., and Naolo Charles. The presentation has benefited from numerous discussions, however, I alone am responsible for any errors or omissions.

CANADIAN SETTLEMENT CONTEXT

- Diverse newcomers
- Complex institutional landscapes
- Challenging labour markets



Canada a top destination for highly skilled immigrants, World Bank finds

U.S. still 1st choice for almost half of world's high-skilled immigrants, and Canada in top 4

By Pete Evans, CBC News | Posted: Oct 19, 2016 11:12 AM ET | Last Updated: Oct 19, 2016 11:21 AM ET



Despite alarmist political movements, global immigration has remained steady since 1960, at about three per cent of the world's population. (Darryl Dyck/Canadian Press)

Latest Business Headlines



■ Samsung recalling millions of washing machines because top can detach November 04, 4:04 PM ET

■ Canada adds 44,000 jobs in October November 04, 2:34 PM ET ☐ 000

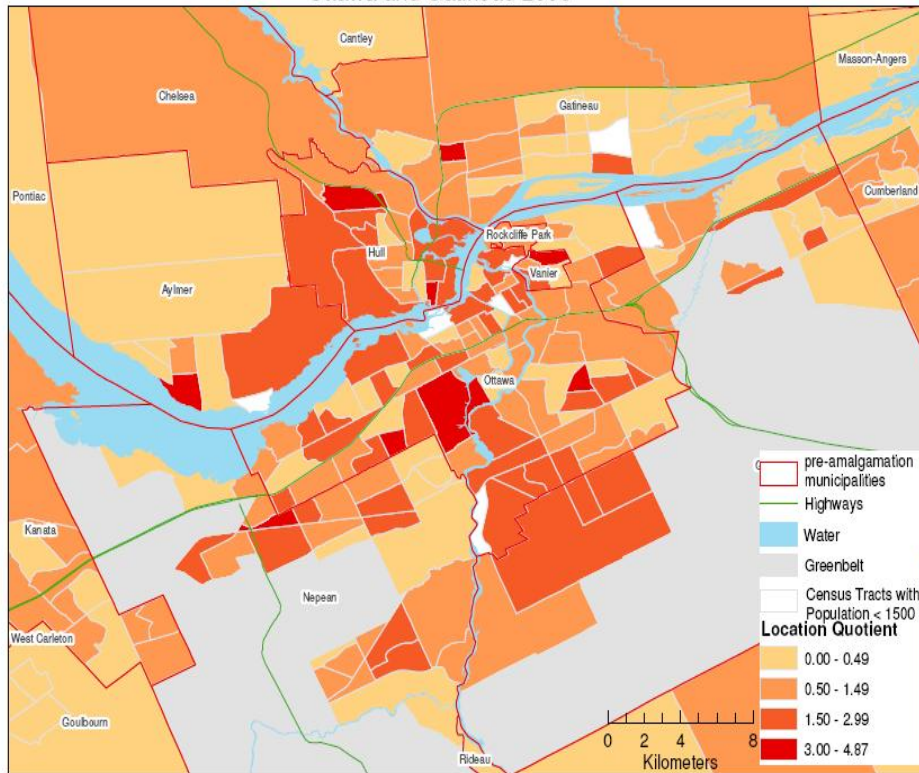
■ Transport Canada hit with new wave of complaints from fed-up Ford owners November 04, 12:14 PM ET ☐ 137

■ Real estate boss vows to punish unethical agents after 'disturbing' video November 04, 12:53 PM ET 📌

■ How one big boat pushed Canada's trade deficit to an all time record in September November 04, 4:03 PM ET ☐ 115

Today's Topics

Distribution and Relative Concentration, South American Immigrants,
Ottawa and Gatineau 2006



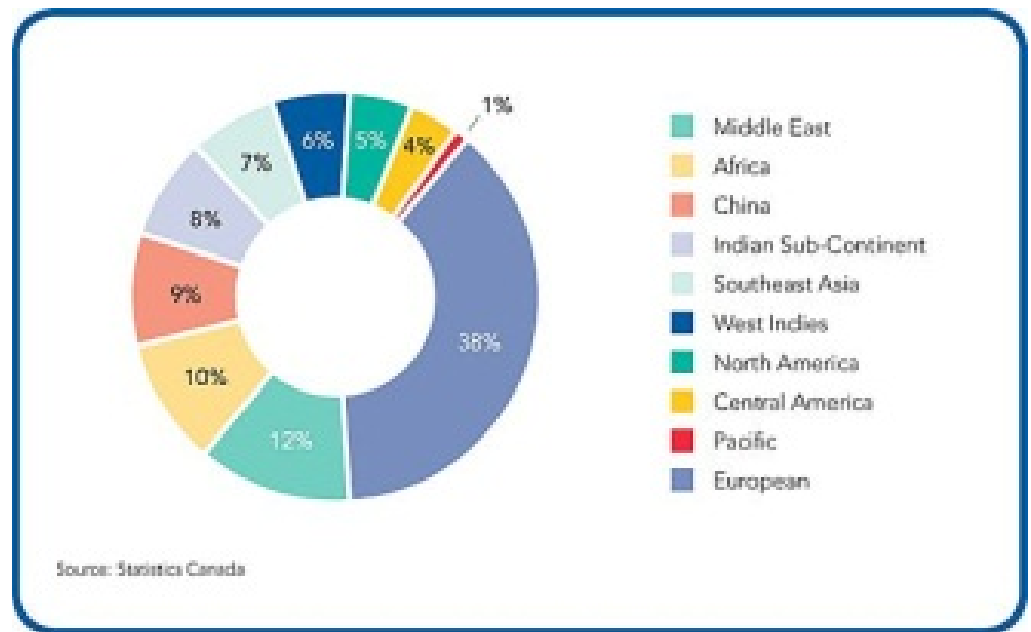
Total Population Ottawa - Gatineau CMA : 1 117 120
Total South American Immigrant Population : 6 445

Statistics Canada: 2006

- Immigration trends in Ottawa-Gatineau
- New understanding of settlement
- Challenges and opportunities

Immigration Trends: Ottawa-Gatineau CMA

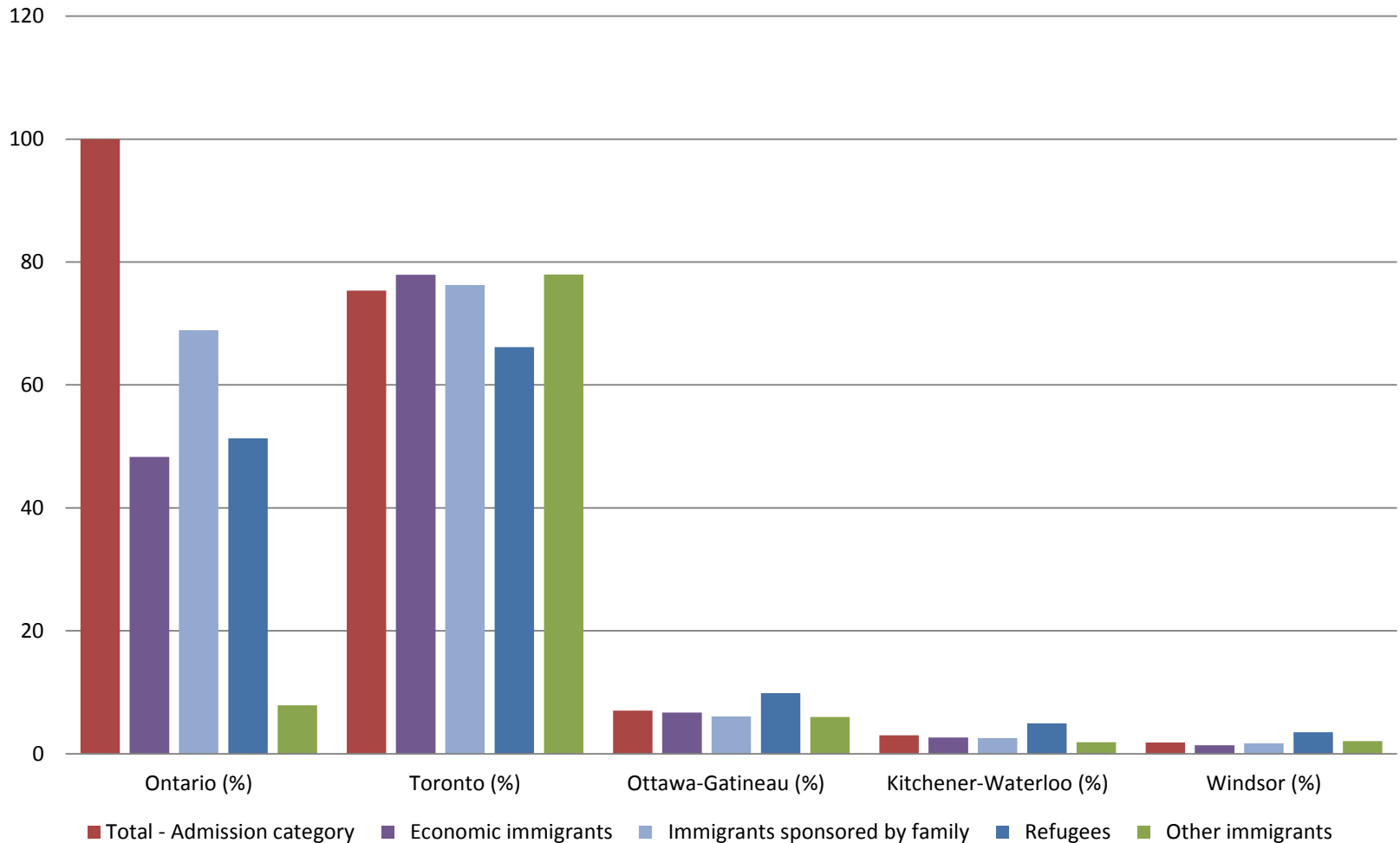
- 2016 Census
- Newcomer trends:
 - Slightly more refugees
 - Racialised minorities
 - Racialisation associated with economic disadvantage



www.ottawa.ca

OTTAWA-GATINEAU: ONTARIO'S 2ND LARGEST DESTINATION

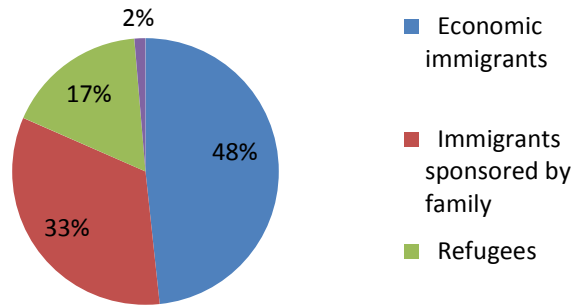
Immigration Class in Selected Metropolitan Areas, Ontario, Census 2016



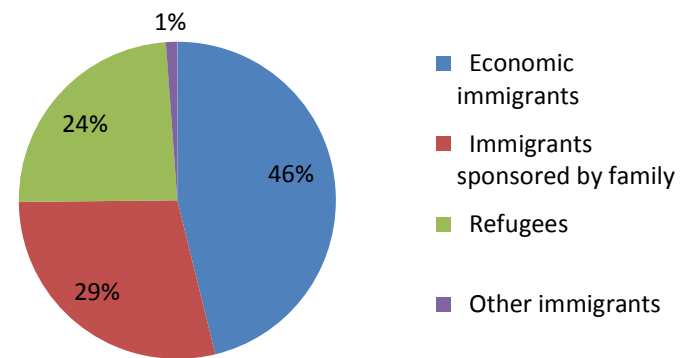
Ottawa-Gatineau, 2011-2016

More Refugees & Fewer Family

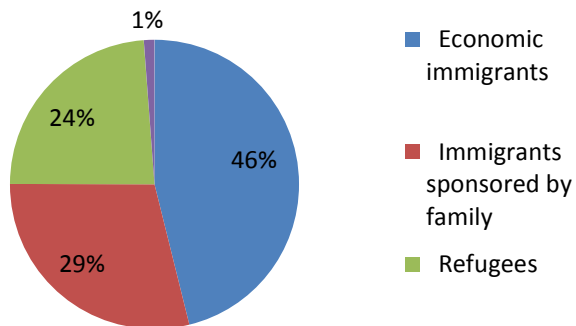
% of Total in Ontario



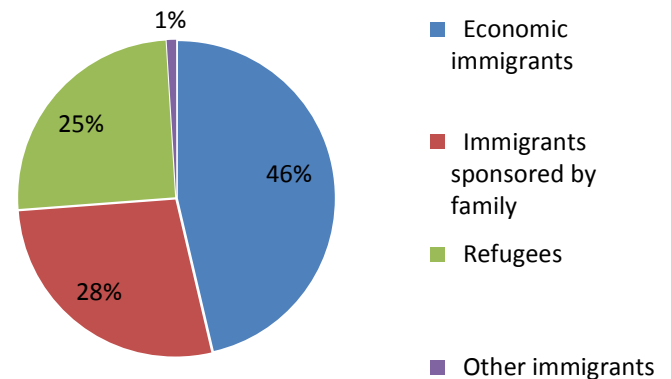
% of Total in Ottawa-Gatineau



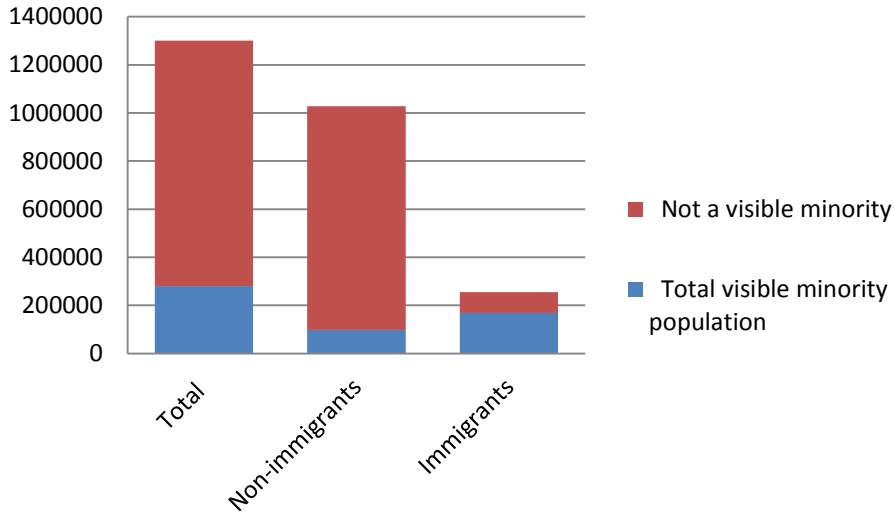
% of Total in Ottawa



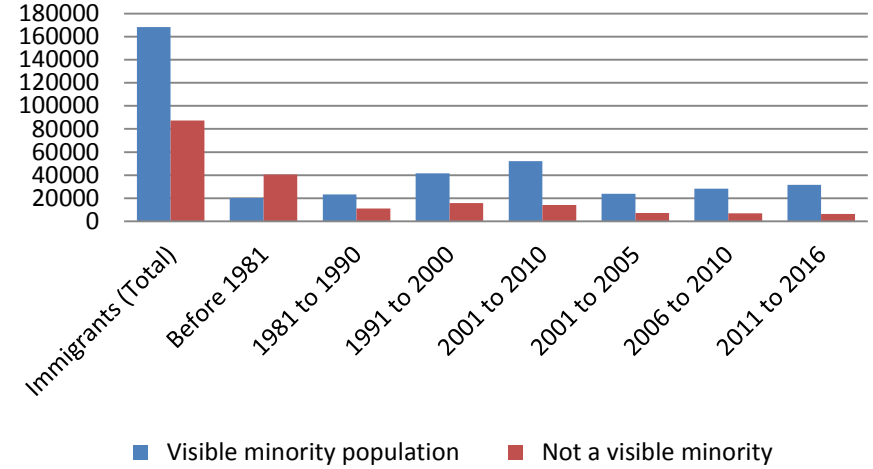
% of Total in Gatineau



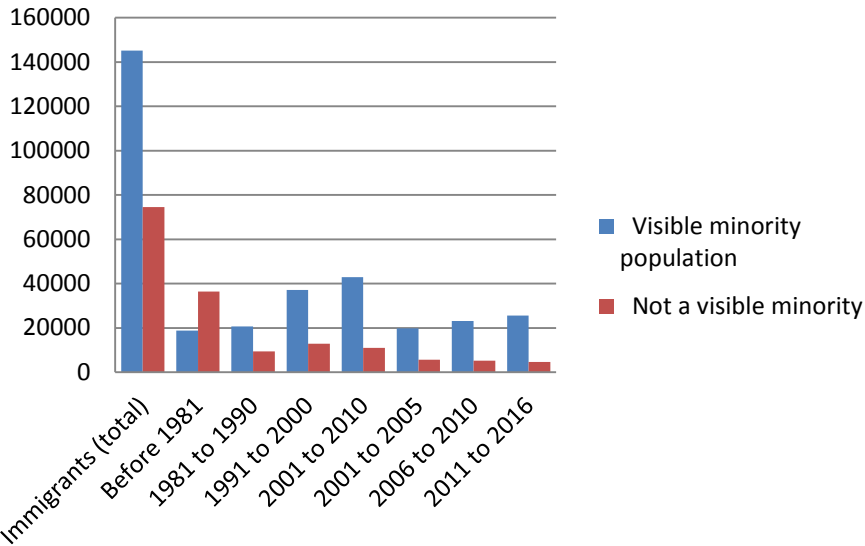
Immigration Status and Visible Minority Status, Ottawa-Gatineau, Census 2016



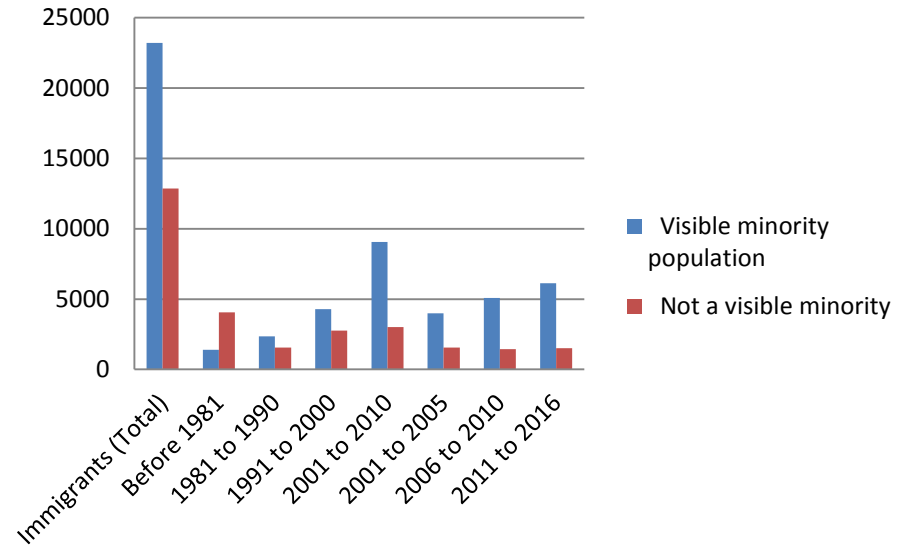
Immigrants by Visible Minority Status, Ottawa-Gatineau, Census 2016



Immigrants by Visible Minority Status, Ottawa, Census 2016

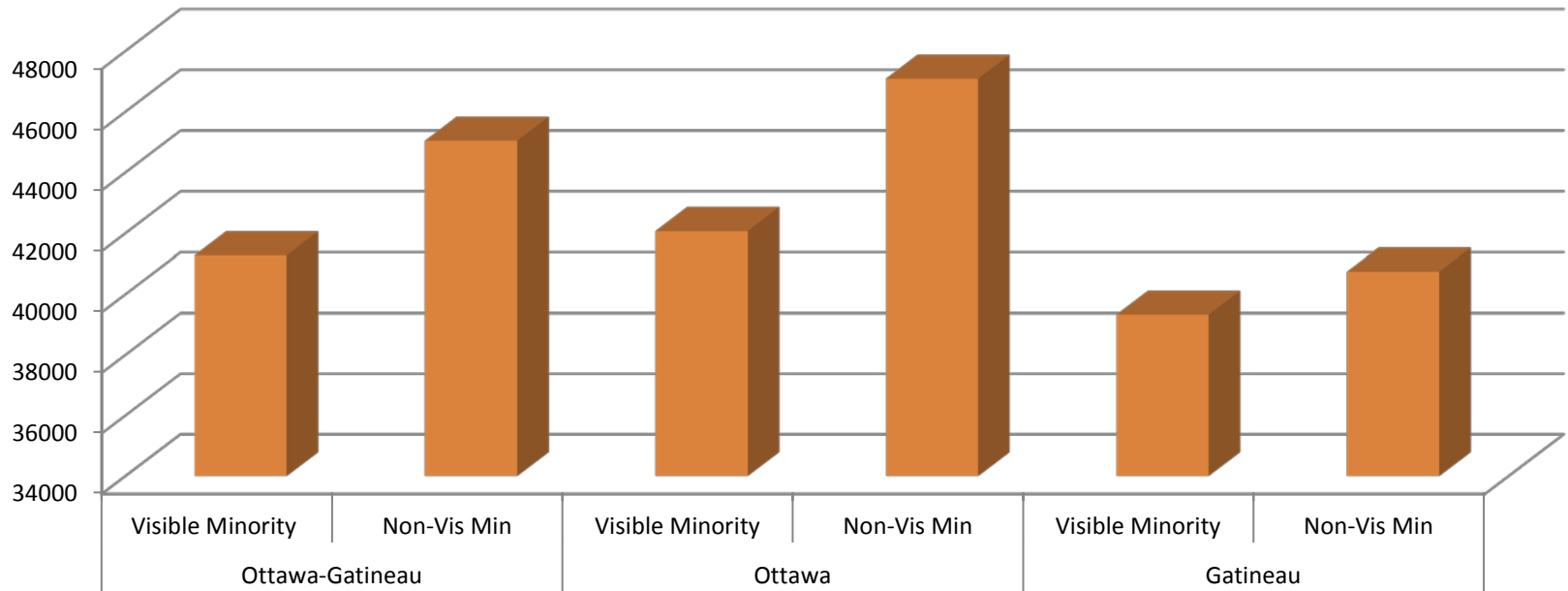


Immigrants by Visible Minority Status, Gatineau, Census 2016

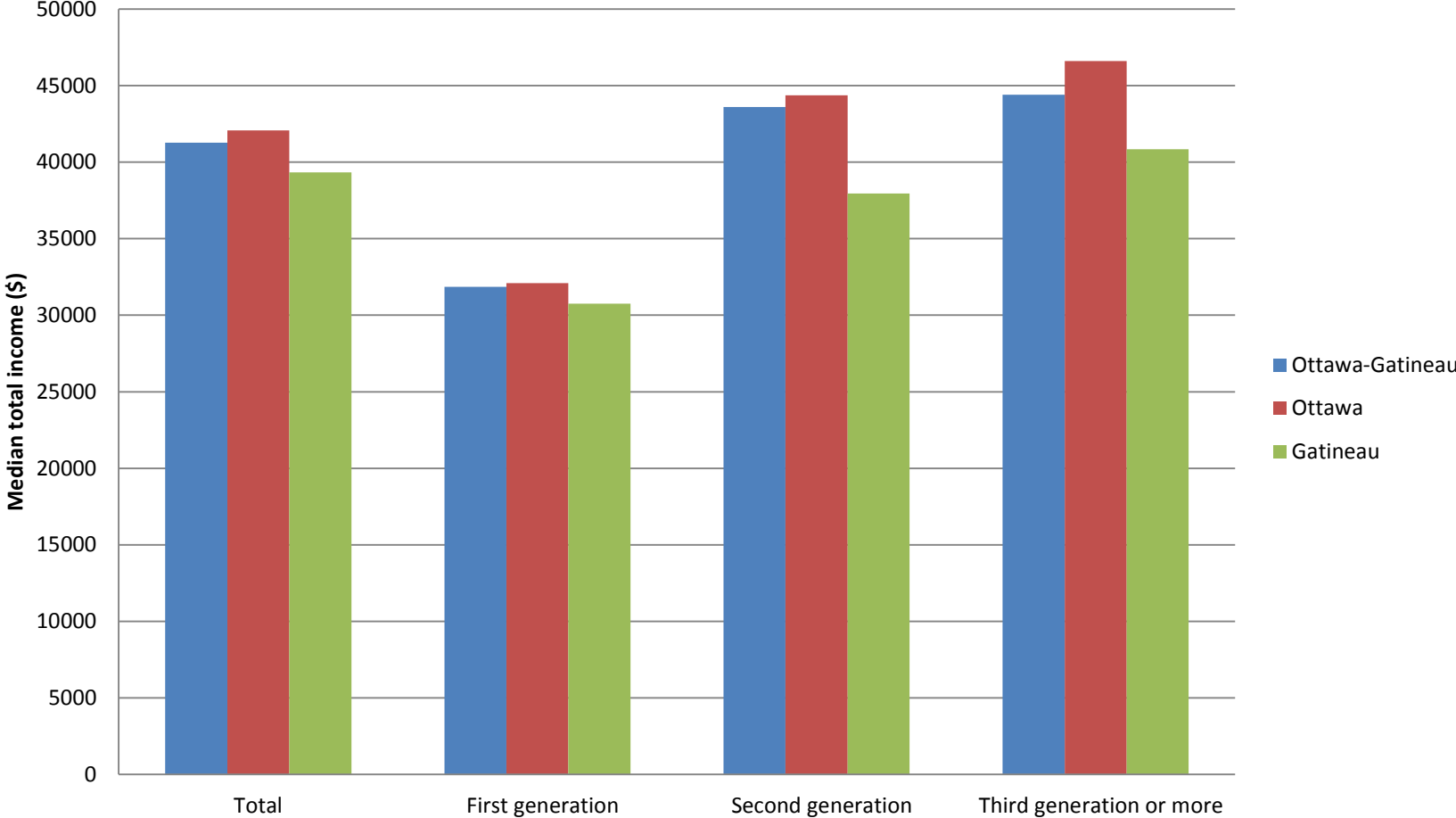


Racialisation and Income

Median Income by Visible Minority Status, Census 2016

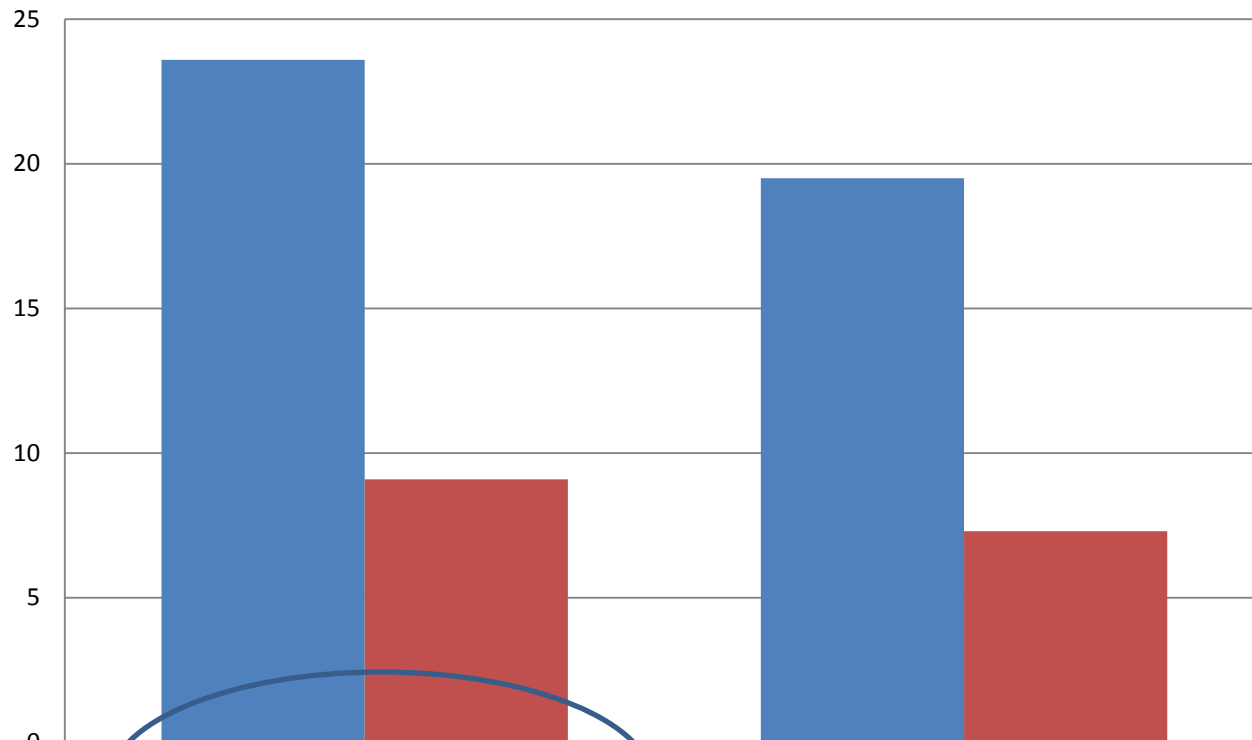


Median Income of Visible Minorities by Generation, Census 2016



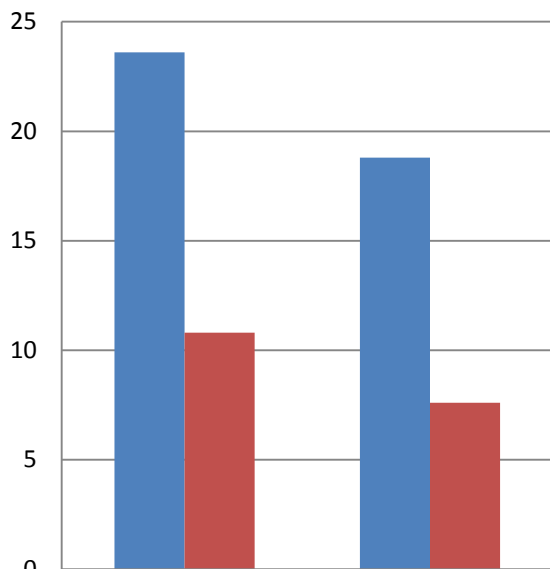
Racialisation and Poverty, 2016

Low Income by Visible Minority Status, Ottawa-Gatineau, 2016



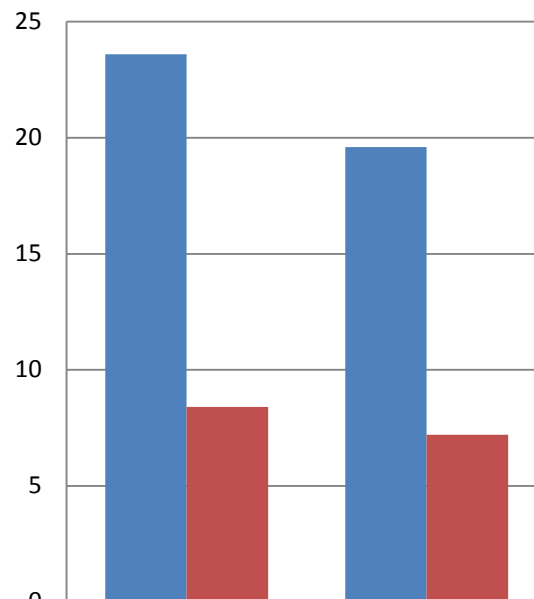
■ Visible minority population
■ Not a visible minority

**Low Income by Visible Minority Status,
Gatineau, Census 2016**



	Prevalence of low income (%) (LIM-AT)	Prevalence of low income (%) (LICO_AT)
Visible minority population	23.6	18.8
Not a visible minority	10.8	7.6

**Low Income by Visible Minority Status,
Ottawa, Census 2016**



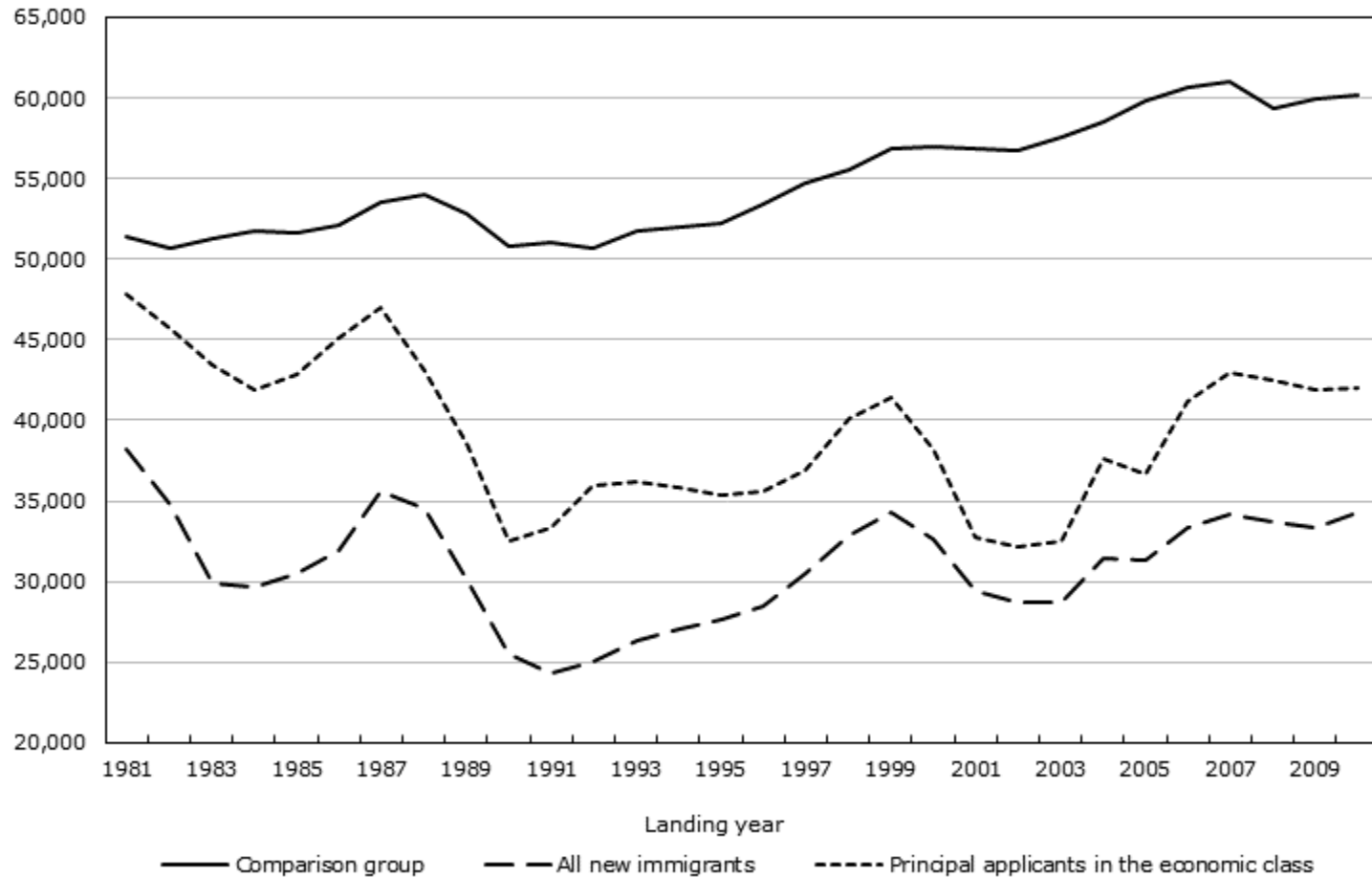
	Prevalence of low income (%) (LIM-AT)	Prevalence of low income (%) (LICO_AT)
Visible minority population	23.6	19.6
Not a visible minority	8.4	7.2

NEW UNDERSTANDINGS OF SETTLEMENT

- Immigration policies assume human capital is key to successful settlement
- Principal applicants in economic class do better than other classes of immigrants, particularly if they have Canadian experience before landing
BUT...

Chart 1
Entry earnings of new immigrant men, 1981-to-2010 landing years

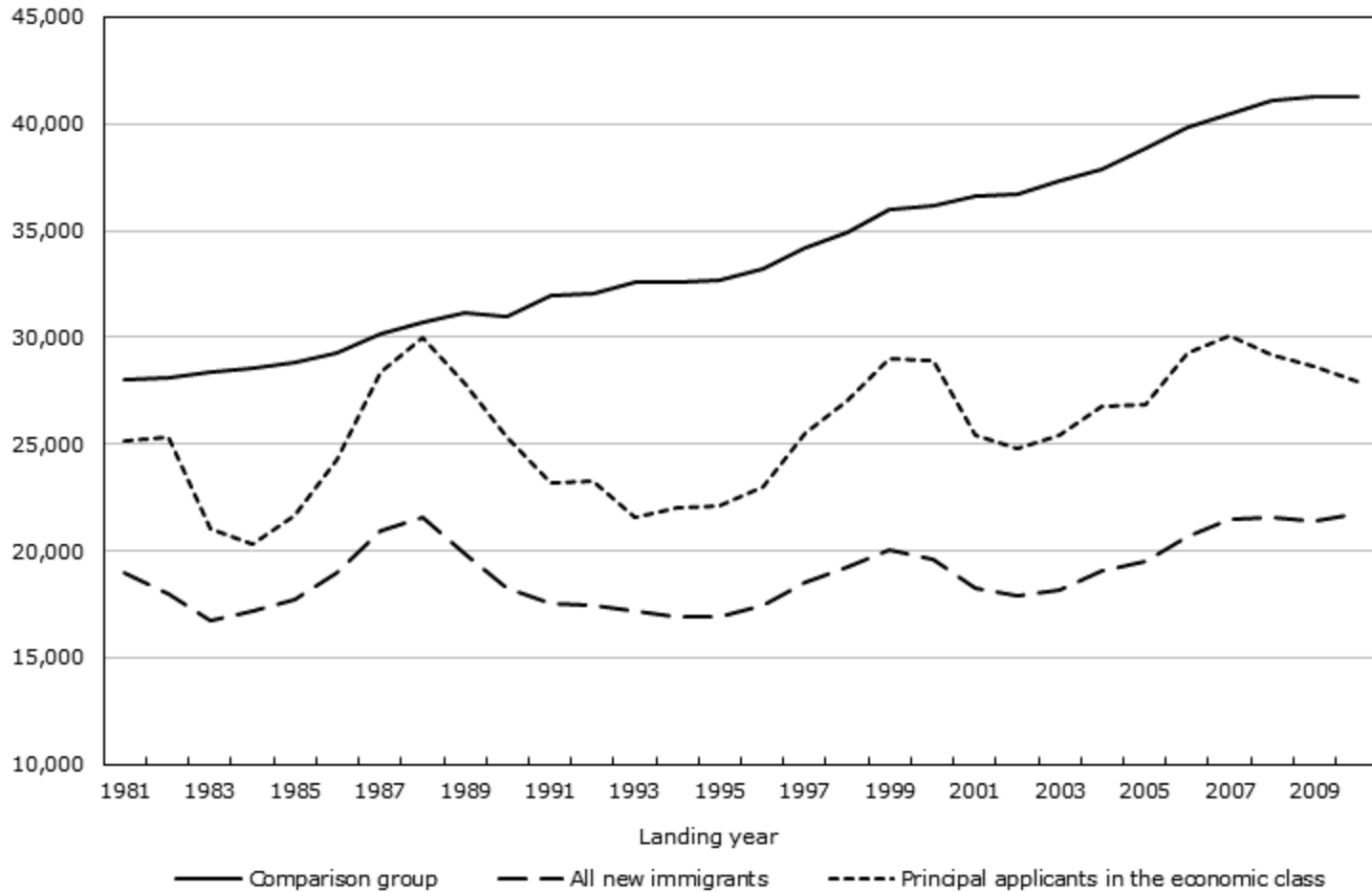
Annual earnings
 (2011 constant dollars)



Source: Statistics Canada, Longitudinal Immigration Database.

Chart 2
Entry earnings of new immigrant women, 1981-to-2010 landing years

Annual earnings
 (2011 constant dollars)



Source: Statistics Canada, Longitudinal Immigration Database.

IMMIGRATION CLASS MATTERS

Table 1: Average annual income in tax year 2011 at 1, 3, 5, 10, 15, and 20 years since landing (YSL), selected economic immigrant principal applicants (2011 \$)

Principal Applicants	YSL=1	YSL=3	YSL=5	YSL=10	YSL=15	YSL=20	Canadian Average
SW PA	26,000	38,000	43,000	52,000	51,000	50,000	41,396
PN PA	42,000	52,000	55,000	49,000	29,000		41,396
CEC PA	67,000						41,396
LCP PA	23,000	26,000	31,000	39,000	30,000	33,000	41,396

Source: IMDB 2011
Dempsey, 2014

Table 3: Average annual income in tax year 2011 at 1, 3, 5, 10, 15, and 20 years since landing (YSL), selected non-economic immigrant categories (2011 \$)

Selected non-economic immigrant categories	YSL=1	YSL=3	YSL=5	YSL=10	YSL=15	YSL=20	Canadian Average
PSR	11,000	16,400	19,500	19,400	23,000	32,000	41,396
GAR	3,400	9,500	13,300	17,200	29,000	25,000	41,396
FC - PGP	7,400	9,500	11,600	10,700	11,700	19,000	41,396
FC - SP	16,600	21,000	23,000	26,000	29,000	33,000	41,396

Source: IMDB 2011
Dempsey, 2014

Settlement is Complicated...

- Dynamic
 - Impacts of newcomer characteristics change over time
- Contextual
 - When:
 - What year newcomers arrive
 - Where:
 - Source region – Discrimination
 - Destination – Provincial, municipal policies & services
 - Newcomer characteristics interact with context
 - How:
 - Visa & immigration class
- Multidimensional
 - Involves belonging, trust, participation
- Multiscalar
 - Community, household and individual strategies

Challenges & Opportunities: Resilience Approach



- We ask how do newcomers overcome barriers
- Multiple pathways to integration and inclusion
- Newcomer characteristics are only a few of the relevant factors
 - All types of institutions, especially provincial & municipal, influence settlement
 - Institutional interactions matter

EXAMPLE:

Housing Syrian Refugees

Housing Challenges

- Rapid and unpredictable arrivals
- High need and low income group
- Few vacancies in many destinations
- Limited number of affordable and suitable housing units

Refugee advocates worry about rent costs as more than 900 refugees set to arrive

Just over 300 refugees per month to arrive before the end of December

[CBC News](#) - September 27, 2016



The Khalifa family fled their bombed out apartment in Syria and relocated to Winnipeg almost a year ago. They are happy here and looking for a larger place to live. (Manitoba Interfaith Immigration Council Inc.)

With more than 900 refugees set to arrive in Manitoba before the end of December, Rita Chahal is worried about where they will live. She says if a rent supplement under the former NDP government is not revived, she doesn't know how newcomers will be able to pay their rent without dipping into their food money or federal child benefit.

MULTISECTORAL, SUSTAINED COLLABORATION



PUBLIC SUPPORT: VOLUNTEERS, DONATIONS, SPONSORSHIP



#WelcomeRefugees

Volunteer Recruitment **Syrian Refugee Initiative**

925

Nova Scotians
offered to volunteer
through **211**

Replied to a
volunteer survey by
Canadian Red Cross

460

215

Nova Scotians received a
free criminal record check
through **HRM**

(fees waived for those wanting to volunteer with ISANS on the Syrian Refugee Response)

new volunteers
have registered through
ISANS and are active
in volunteer roles

440

559

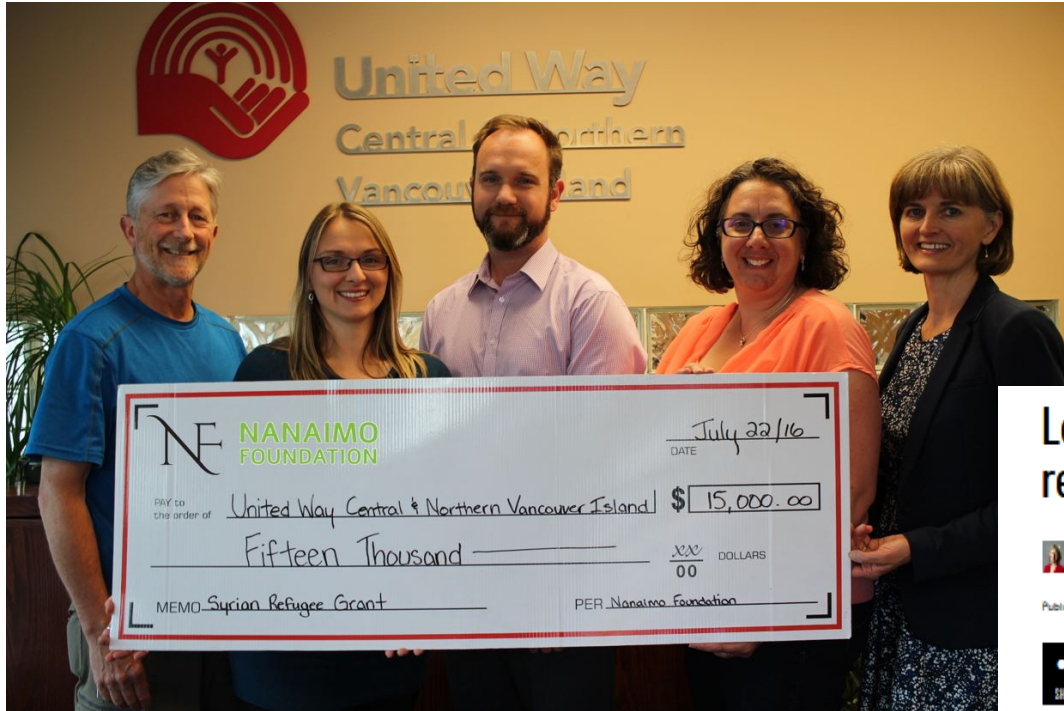
total number of **ISANS**
volunteers involved in the
Syrian Refugee Initiative



Donate. Volunteer. Sponsor.

All Canadians can help welcome
Syrian refugees. Get involved.

CORPORATE INVOLVEMENT



Local landlords step up to help Syrian refugees find homes in Ottawa

JACQUE MILLER, OTTAWA CITIZEN
More from Jacques Miller, Ottawa Citizen

Published on: February 17, 2016 | Last Updated: February 17, 2016 7:44 PM EST



Ottawa refugee experts predicted that finding housing for the Syrians now flooding into the city would be a major problem. They are arriving in a bunch, families are large, and there's already a shortage of affordable housing.

But local landlords have stepped up to help, and it hasn't turned out to be that difficult so far. That's the general consensus among a range of people interviewed. More than half the refugees sponsored by the federal government who have arrived since December, for instance, have found a place to live. Ottawa has welcomed government-sponsored 737 Syrian refugees, and 405 of them have moved into their own apartments or townhouses, said Chamrouen Lay, the manager of Maison Sophia refugee settlement house.

Usually refugees spend a month in temporary lodging while staff help them adjust to Canada and find a place to live. But the Syrians, who are housed at Maison Sophia and three Ottawa hotels, have been moving into permanent housing within two or three weeks, says Lay. Settlement staff have to make room for newcomers — there could be as many as 400 more Syrian refugees arriving by the end of the month, he said. But while it's been harder to find houses for large families, there's been no bottleneck.

INNOVATION BY RAP PROVIDERS

Winnipeg

- Expanded transitional housing rapidly and flexibly
- Increased number of units approved for rent supplements
- Obtained more household rent supplements
- Additional staff

Toronto



WHAT CAN WE LEARN?

- **Broad public support**
- **Resources for innovation**
- **Encouragement to innovate**
- **Responsive to local situation**

CONCLUSIONS

- Newcomer integration and inclusion is difficult and prolonged
- Successful assistance is:
 - Locally tailored
 - Rooted in institutional collaboration
 - Adequately funded
 - Beneficial to many marginalized groups



olip | plio

ottawa local
immigration partnership

partenariat local
pour l'immigration d'ottawa

hire | embauche
immigrants ottawa

THANK YOU

Building Migrant Resilience in Cities/ Immigration et résilience en milieu urbain

bmrc-irmu@yorku.ca

Valerie Preston, York University

vpreston@yorku.ca

QUESTIONS/ COMMENTS

